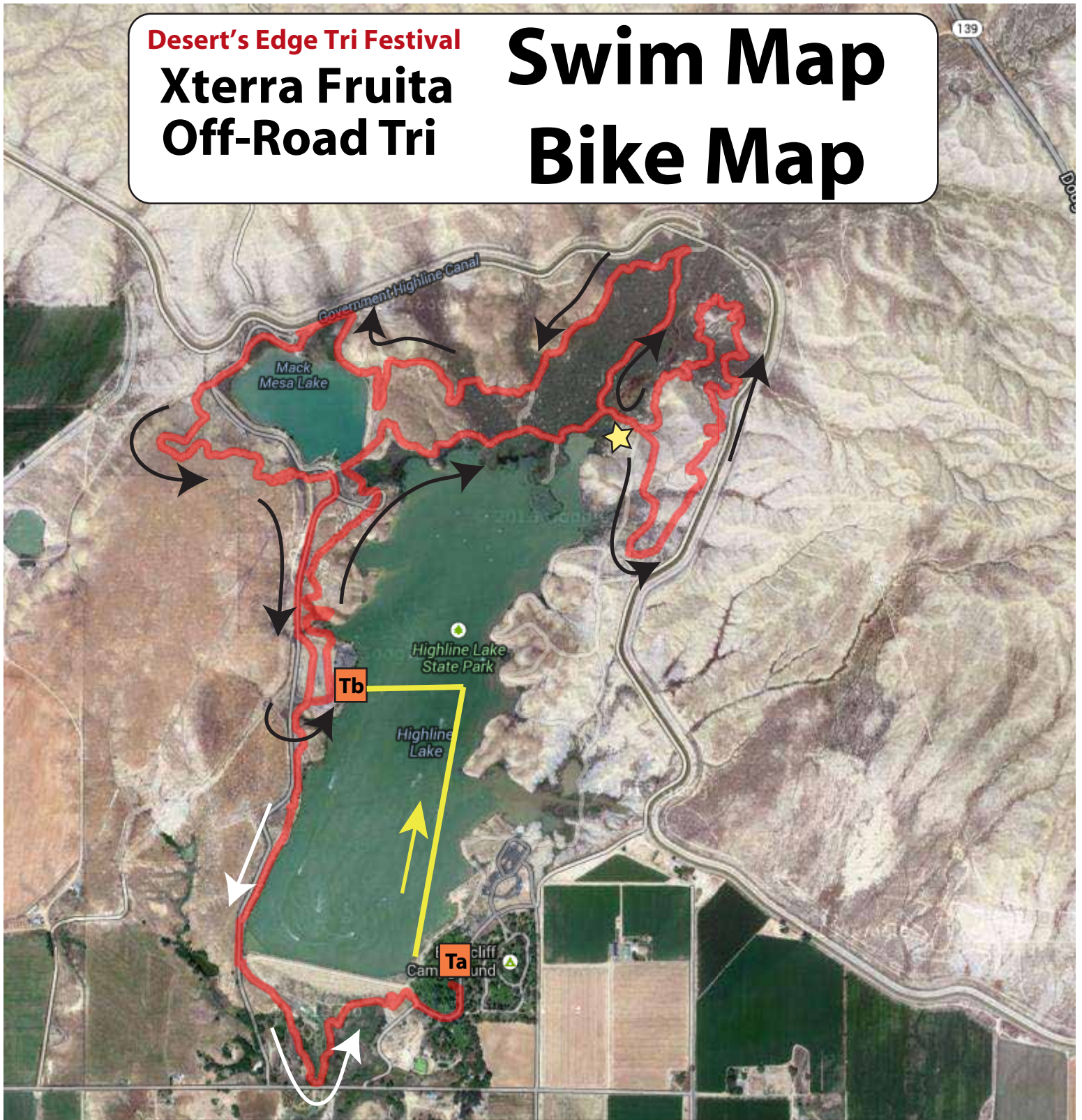








Desert's Edge Tri Festival
Xterra Fruita
Off-Road Tri

Swim Map

Bike Map

139



-  **Swim Course - 1200 Meters (point to point)**
-  **Bike Loop - Ride 2 Laps**
-  **Bike Return - from loop to transition**
-  **Transition-A: Swim Start, Bike Finish, Run Start Happen Here**
-  **Transition-B: Swim Finish, Bike Start**
-  **2-Way Bike Traffic - Riders Keep Right (approximately 100 meters in length)**